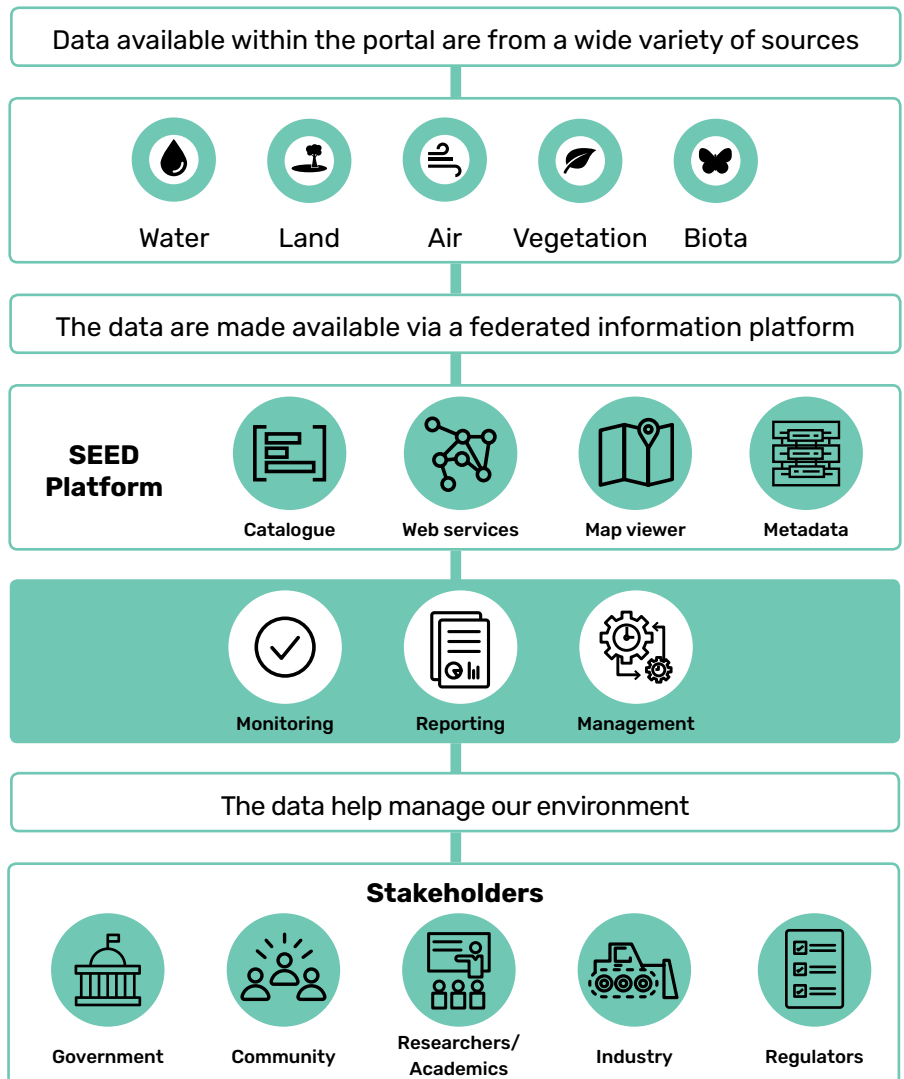


The Sharing and Enabling Environmental Data (SEED) portal is an initiative of the NSW Government to provide the community with reliable and readily available information about the environment of New South Wales. The portal brings together over 2600 environmental datasets held by NSW government entities related to water, land, air, vegetation and threatened species.

What is SEED?

SEED was developed in response to two key recommendations from the NSW Chief Scientist and Engineer's 2014 Review and the NSW Independent Biodiversity Legislation Review.

These reviews called for a whole-of-government approach to open environmental data. SEED demonstrates a true willingness for community engagement and improves trust in government decision-making through having environmental data easily accessible and at a single access point to the public.



Coming to SEED

An exciting new visual identity will be applied to the SEED website. There will also be a redevelopment of the user interface and interaction on SEED to improve accessibility, make the platform more customer centric and simplify the interface to the data. This will improve user interaction with SEED and the datasets.

To meet all requirements of the NSW Chief Scientist and Engineer's recommendations, SEED is expanding to incorporate industry and citizen science data.



Contact

For more information

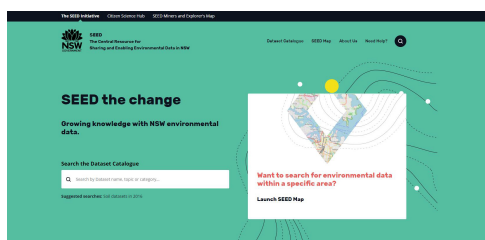
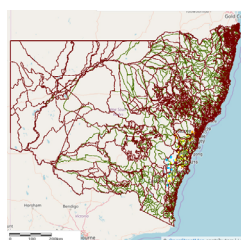
Visit
seed.nsw.gov.au

Email
info@seed.nsw.gov.au

The SEED mapping Tool

With SEED, you can search for environmental data and view it on the in-built map. Users can overlay different types of data to gain a more complete picture of environmental conditions in a particular location. The user can then export and print the map to distribute findings.

SEED also provides resources that assist the user to understand the data, and links to the data in various formats should users wish to download information.



What is different about SEED?

SEED represents a collaborative effort between government agencies to provide environmental data in a single source, rather than separately. Users can explore and visualise data without requiring scientific expertise or specialist mapping software.

SEED has been a catalyst for applying Creative Commons licensing to many data resources and for the first time, data is also accessible in a standard format. There is also the improvement of Metadata and Data Quality Statements that provide essential background information.

The data portal provides the community with a medium for publishing data and giving visibility to new environmental data.

Environmental Data

Government agencies invest significant resources into acquiring, managing and delivering environmental data. The data available on SEED can be used to support reporting, resource management, policy development and science needs.

Collaboration

SEED streamlines data sharing cross government agencies enabling direct access to environmental information that will ultimately speed-up and improve decision making. SEED seeks to extend this collaboration across sectors to include industry, community, researchers and academics.